

5

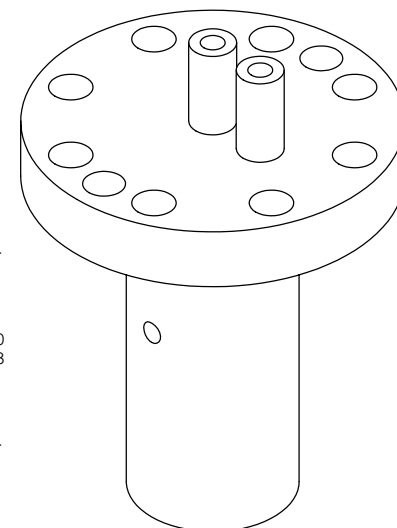
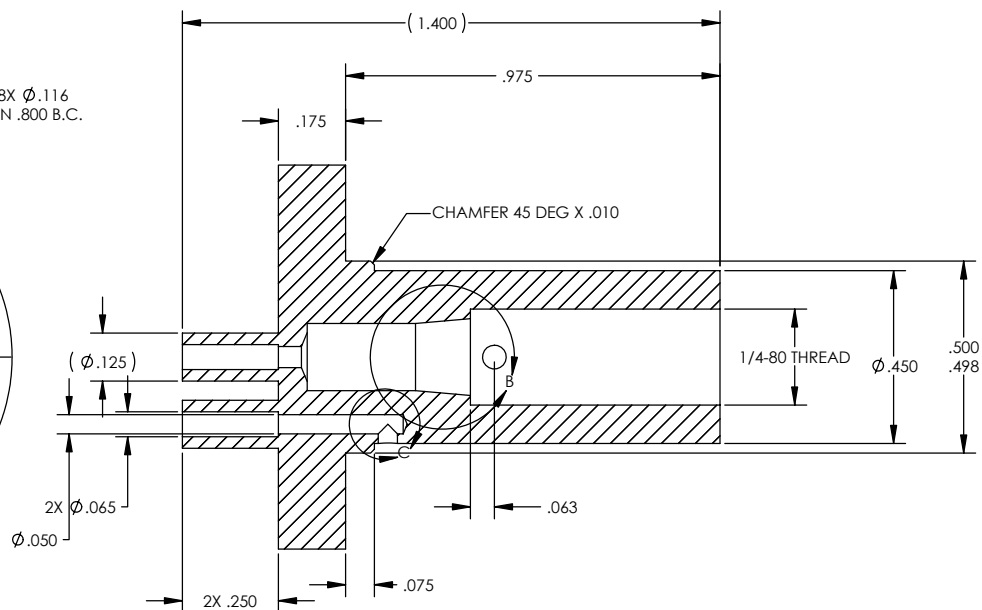
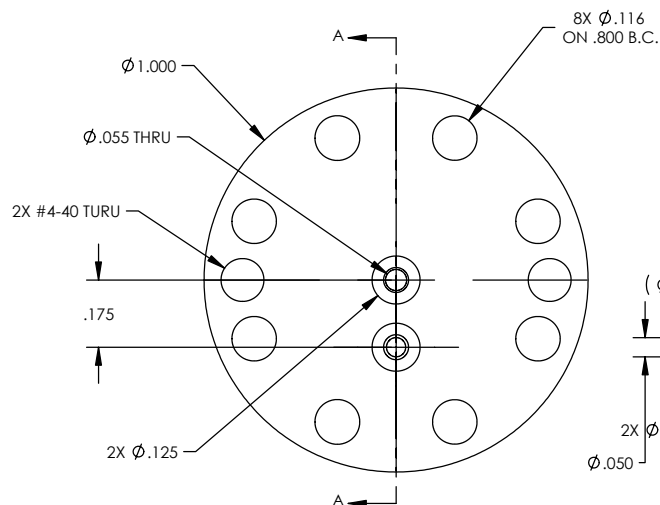
4

3

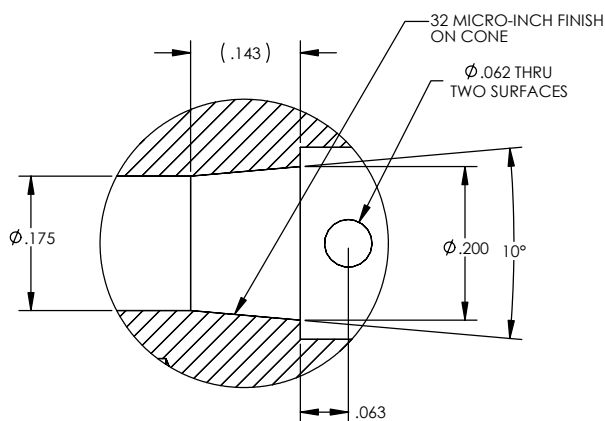
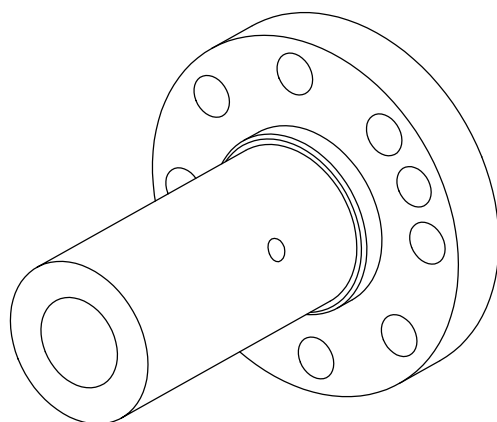
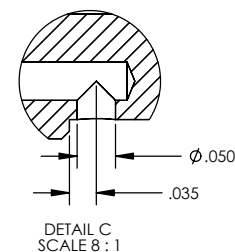
2

1

REVISIONS			
ZONE	REV	DESCRIPTION	DATE
	B	COMBINED WITH SCREW HOLDER	11/5/2003
	D	CHANGED TO INDIUM JOINT	5/26/2004



SECTION A-A

DETAIL B  
SCALE 8 : 1DETAIL C  
SCALE 8 : 1

- NOTES:
1. DRILL POINT IS ACCEPTABLE AT BOTTOM OF .050" HOLE.
  2. .065 DIAMETERS ARE FOR 1/16 TUBING.
  3. DRILL POINT IS ACCEPTABLE AT BOTTOM OF .175 HOLE, AS LONG AS FULL DIAMETER IS REACHED TO SPECIFIED DEPTH.
  4. 1/4-80 THREAD TO FIT WITH P/N -156.
  5. THREADS TO BE COMPLETE UNTIL .10 FROM BOTTOM.
  6. .495-.500 DIA TO FIT WITH P/N -187.

UNLESS OTHERWISE SPECIFIED:		High Precision Devices			
DIMENSIONS ARE IN INCHES		1668 Valtrec Lane, Suite C, Boulder, Colorado 80301			
DECIMAL TOLERANCES:		Phone: (303) 447-2558 Fax: (303) 447-2548 Web Site: www.hpd-online.com			
X .030 XX .015 XXX .005		TITLE:			
ANGULAR TOL: ± 1° SURFACE ROUGHNESS: 32		p02101-097D valve body, pot			
INTERVAL AND EXTERNAL SURFACE		CONFIGURATION: 00-Default			
INTERSECTIONS SHALL BE UNIFORMLY FINISHED WITH CHAMFER .005/0.010 X 45° OR RADIUS .005/0.010		SIZE QTY PER ASSM: 1 SCALE: 4:1 SHEET 1 OF 1 REV			
CHAMFER ALL THREADED HOLES 110% OF MAJOR DIAMETER X 45°		DATE: 5/27/2004 DRAWN BY: C. Danaher D			
MATERIAL: Brass					
FINISH: NONE					